

Ghostbusters Proton Pack Cake Mod

Designed specifically for the Hasbro Ghostbusters Afterlife proton pack

created by www.rightcoastcreative.com/ghostbusters

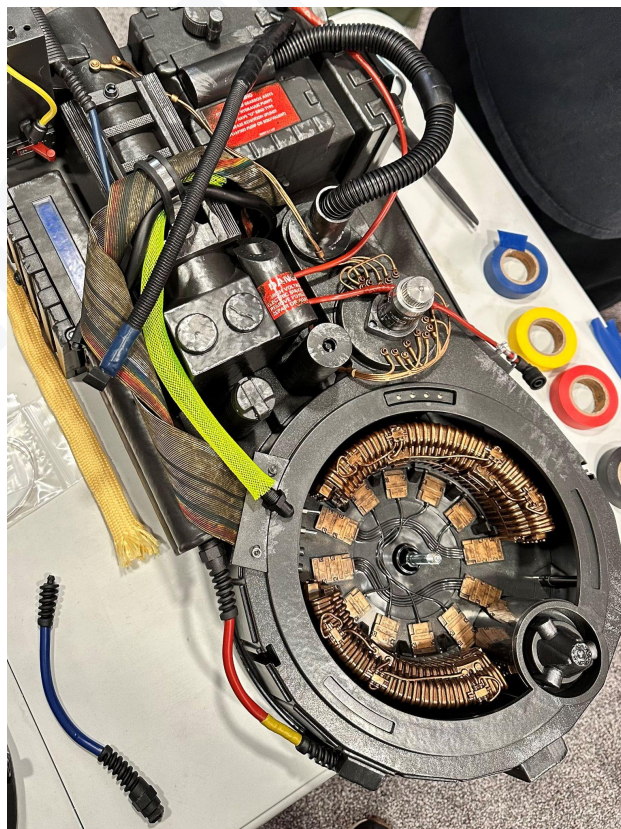
Some skill and mechanical knowledge of the pack is required to perform this mod. All parts of this kit have been tested and illustrated to help provide the best possible guide in assisting you to complete the upgrade. I assume no responsibility for any damage during disassembly, installation, modifications and reassembly, or if parts are installed incorrectly.

This LED kit is wired to bypass the cyclotron alarm and allows the pack to run when the cyclotron lid is removed. (For stock Haslab packs).

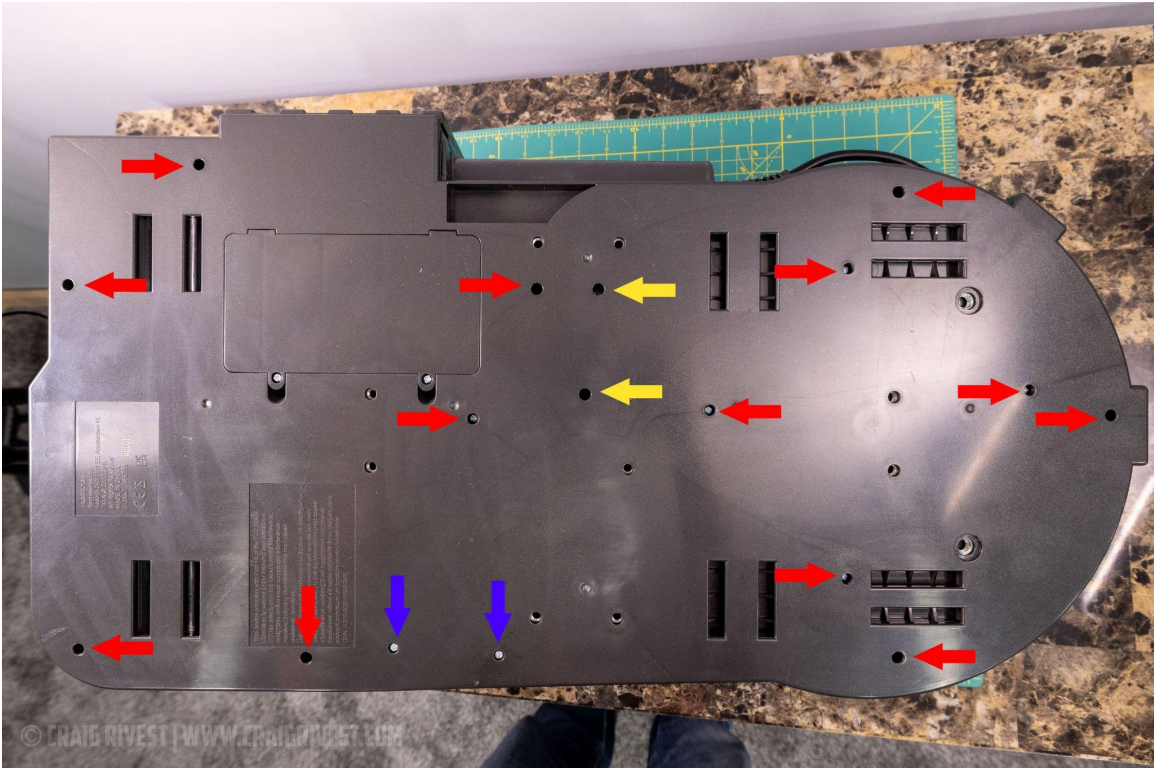
The following steps are installing the cake mod LED on a normal Haslab Proton Pack. The NinjaTunes process is similar, except you will be plugging the cake mod directly into the relay supplied in the NinjaTunes kit. See step 11 for relay photo.

1. Remove the Cyclotron

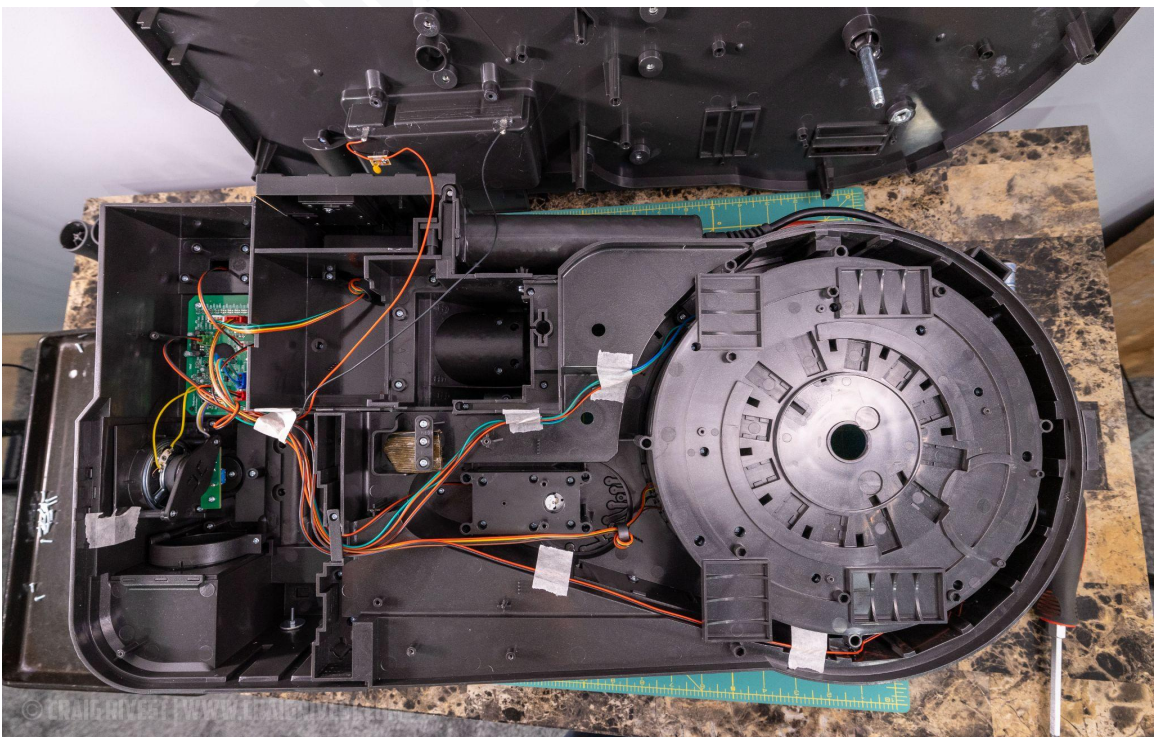
This step is easy to overlook, but if you forget to do it, you could risk breaking the back cover which contains a through bolt. So before you remove the back panel, you will need to remove the bellows, bumper and all cyclotron parts. Then flip the pack over.



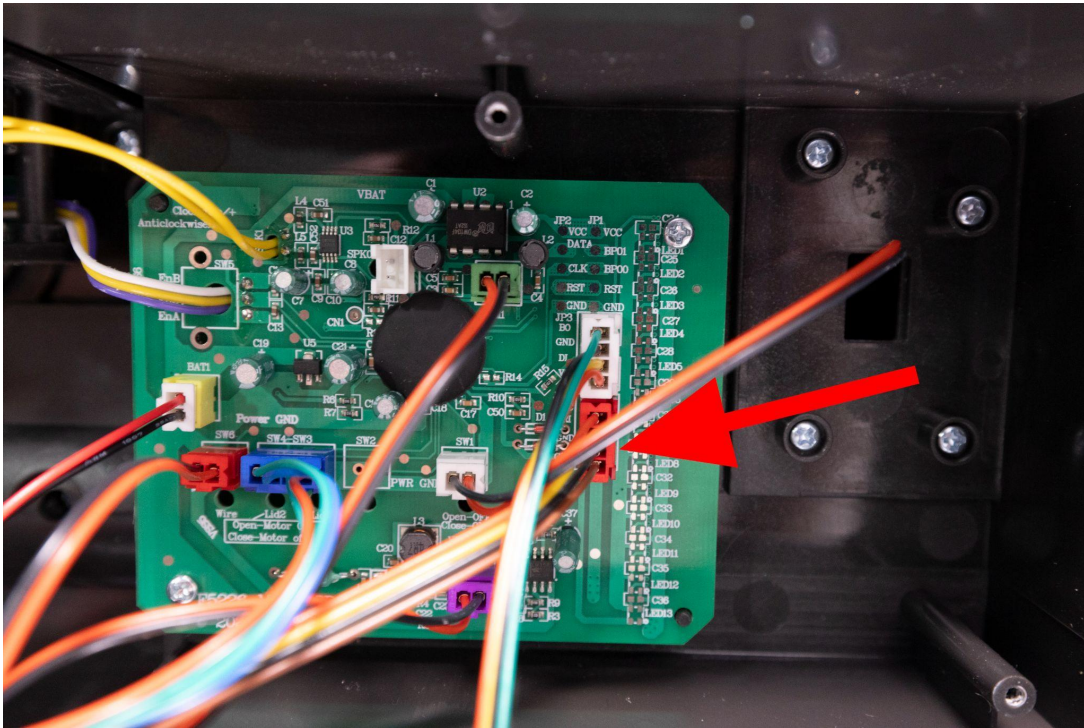
2. Remove the battery door and then the 17 back cover screws. The screws marked with blue are shorter, so keep track of those. The screws marked yellow hold the Filler and Beam line on (the two cylindrical tubes) in place on the front, so they may drop out or twist when unscrewing, just be mindful of that.



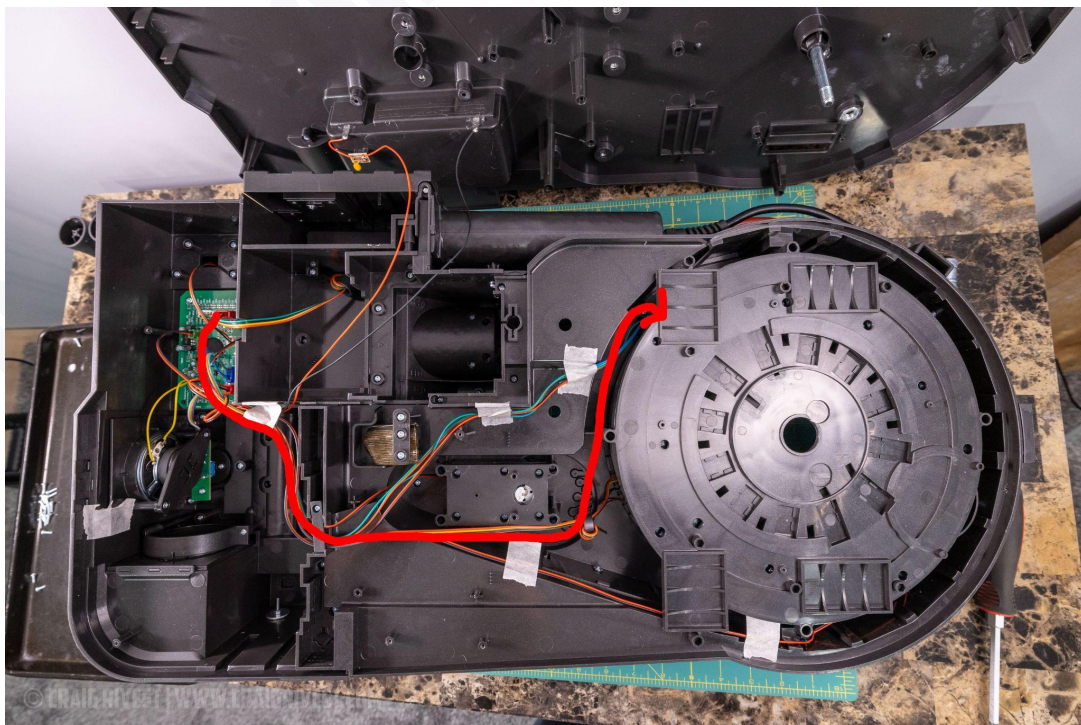
The back cover should now snap off, work slowly around the edges and lift straight up. Once the cover is off, be careful not to over extend the connected factory power wires. They go from the back cover to the BAT1 location on the main board.



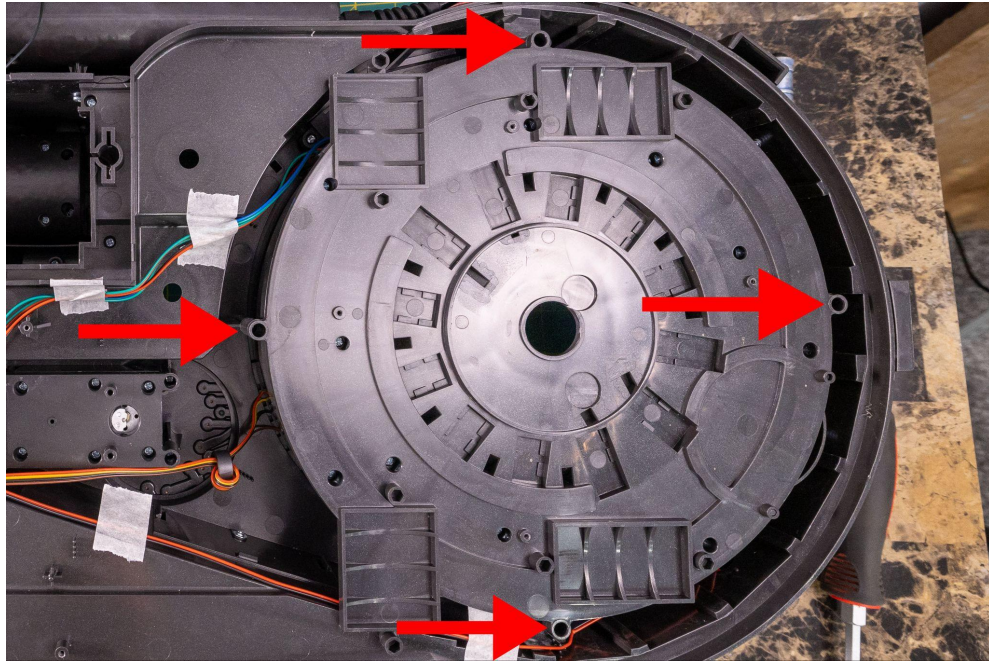
3. Disconnect the red male 4 pin connector from the main board. Then install the male jumper harness from the cake mod kit into the factory board you just disconnected from. Then install the red male 4 pin connector into the other end of the cake mod jumper harness.



4. Route the cake mode wiring harness through the pack. Recommended path marked below.



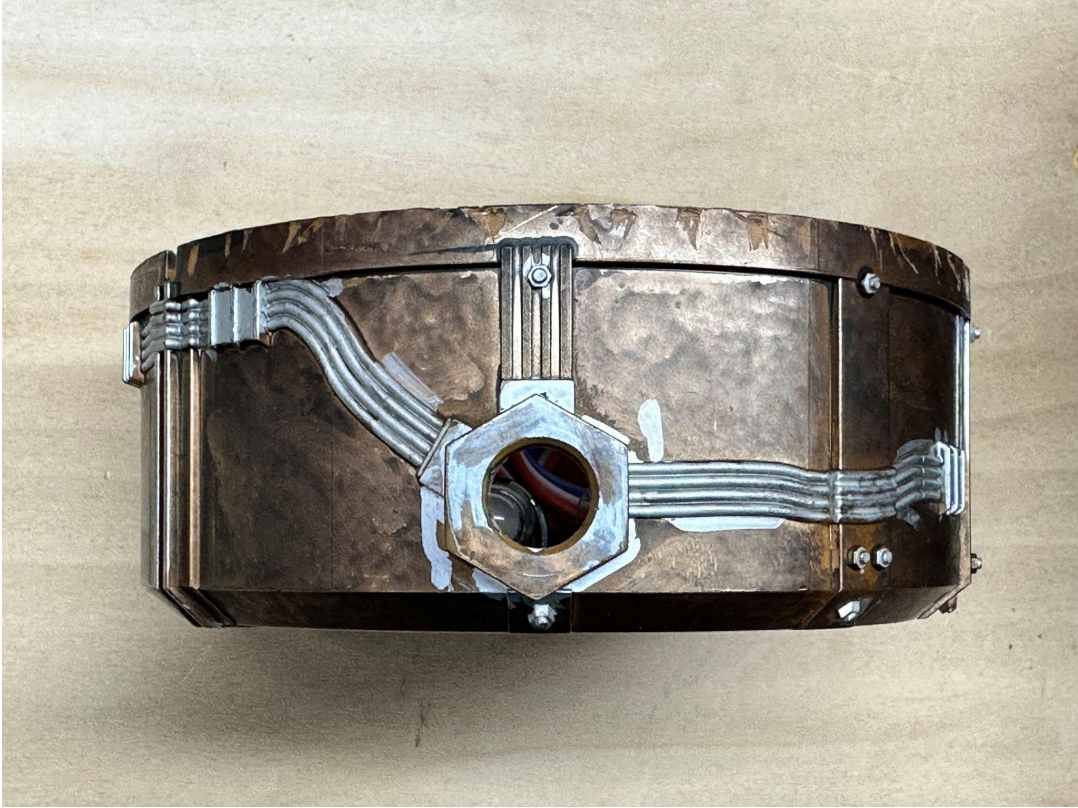
5. This is where you will need to get creative. You will need to drill a hole in the side of the cyclotron housing to feed the cake mod wiring through. This will be up to you on where this hole will be, but I would recommend keeping it near the switches. There are 4 screws that hold this housing on, should you need to remove it to drill a hole.



6. Now here comes the fun part. Carefully work the cyclotron cake lid off with a small flat blade screwdriver. Do this by inserting the screwdriver under the lid and slowly work the lid open by breaking the glued seams. You will need to apply some force, but **BE VERY CAREFUL**, you can damage the cover.



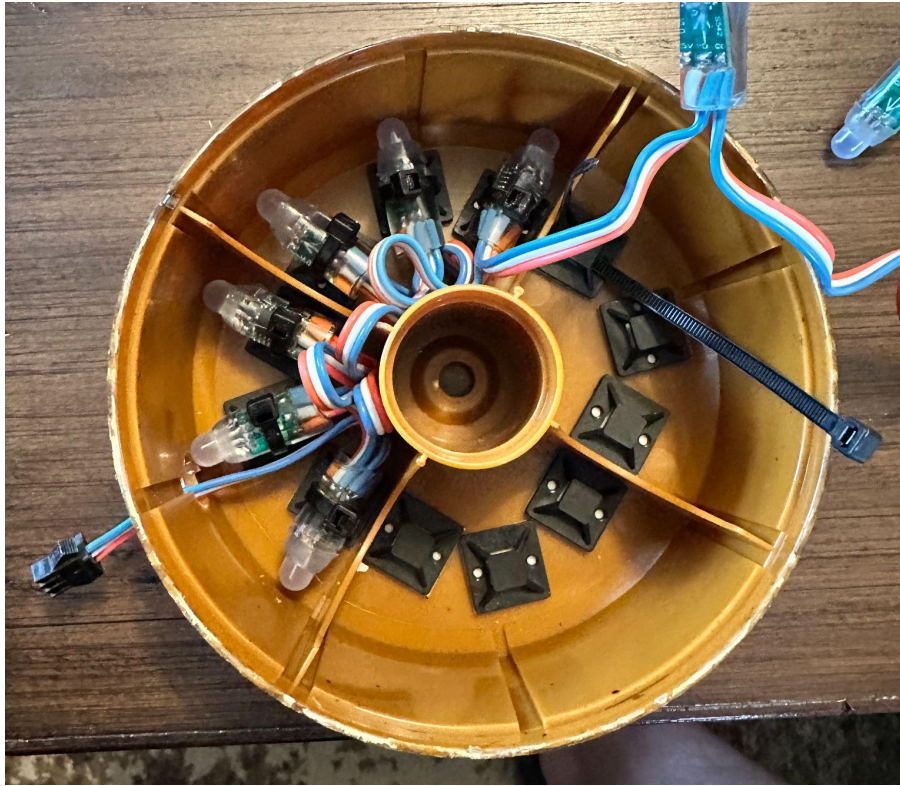
7. Once the cover is off, you will need to drill a hole in the cyclotron. I used a 1/2" drill bit to clear out this hole shown below.



8. Once the cover lid is off, install the 12 supplied 3M sticky mounts to hold the LEDs in.



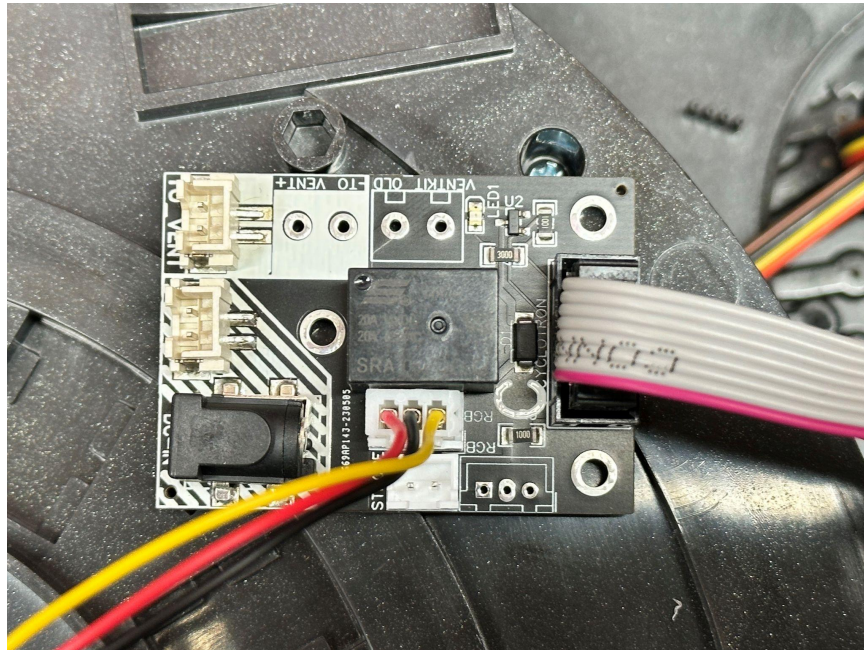
9. Starting with the connector end of the LED's, put the connector through the hole and zip tie the LED's in one at a time. Install them going in a clockwise direction.



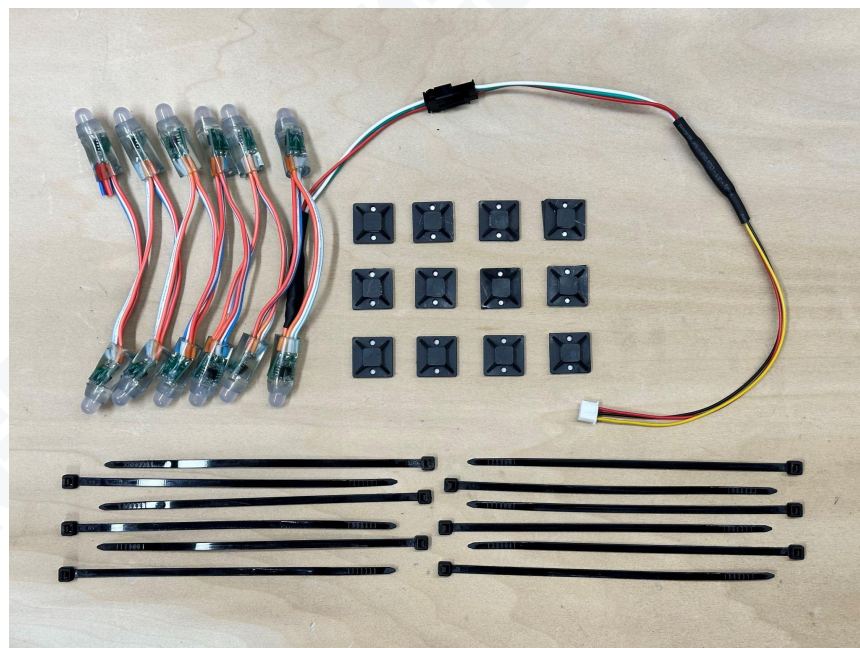
10. The LED's inside the cake should look like this once complete. You can now install the cover, you can leave it loose or glue it back on, but it will be held in place by the cover nut regardless.



11. You can now reassemble your pack in the reverse order. If you have the NinjaTunes kit, you will be plugging the cake mod wiring harness directly into the 3 pin connector on the NinjaTunes relay board.



NinjaTunes Wiring Kit Below



~Craig Rivest (Right Coast Creative LLC)
www.rightcoastcreative.com/ghostbusters